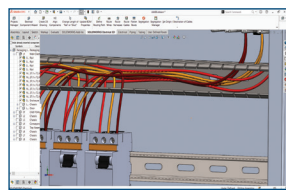


WHAT'S NEW IN SOLIDWORKS® 2022—ECAD

SOLIDWORKS Electrical

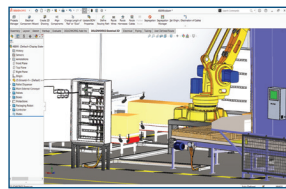


1 Faster 3D electrical routing

- Significantly accelerate the routing of 3D wires, cables, and harnesses in your machine or product.
- Try more design ideas during the design cycle with faster route creation.

Benefits

Accelerate electrical design creation and design changes.

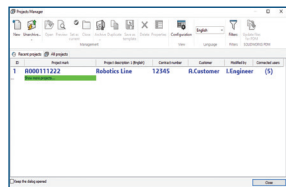


2 Improved performance with large electrical projects

- Speed up commonly used operations such as copy, paste, delete, and undo.
- Make design changes from schematic to 3D faster.
- Create large electrical projects more quickly.

Benefits

Save time when working with large electrical projects.

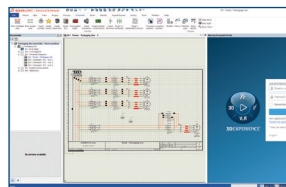


3 Increased performance in multiuser electrical design environments

- Enable faster operations for multiuser groups doing concurrent electrical design.
- Make data sharing and collaboration between multiple users easier.

Benefits

Increase productivity with better collaboration among concurrent users.

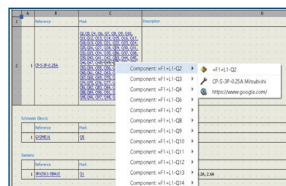


4 Enhancement to the Electrical Content Portal (ECP)

- ECP is now included in the Task Pane of SOLIDWORKS Electrical, making it easier to access.
- Search for electrical content directly from inside SOLIDWORKS Electrical.

Benefits

Create electrical designs faster with streamlined sourcing of electrical content.

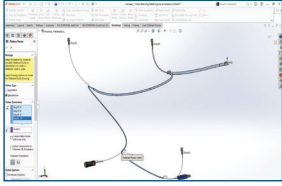


5 Improved navigation in electrical reports

- Enable multiple hyperlinks per report cell.
- Link electrical reports to component datasheets.

Benefits

Improve design quality with easy navigation of your electrical project documentation.

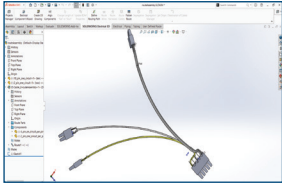


6 Enhanced harness flattening documentation

- Select the main segments of a harness route in 3D to guide the flattening process.
- Simplify the organization of harness documentation by targeting the trunk line.

Benefits

Improve product quality through more complete documentation and quicker access to component reference documents.

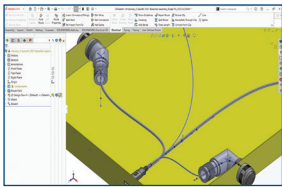


7 Improved documentation of harness and cable designs with shared electrical connectors

- Include external connectors that are shared but outside of the electrical route.
- Include external connector information in documentation tables such as circuit summary tables and connector tables.
- Add block views of external connectors on harness board drawings.

Benefits

Enjoy greater flexibility in documenting electrical harness and cable designs.

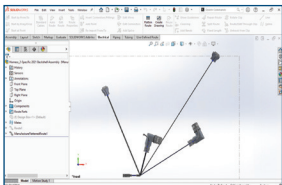


8 Support for backshells

- Use both straight and angled backshells in your electrical route design.
- Create the route and then add, rotate, or change backshells as needed.

Benefits

Improve design quality through a more complete 3D representation of the overall design.

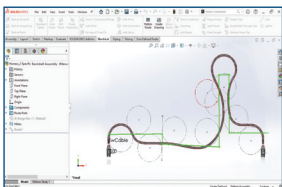


9 Enhanced 2D documentation of backshells in electrical designs

- Include straight or angled backshells in harness board drawings.
- Include views of angled backshells in flattened harness views.

Benefits

Enjoy more complete and more flexible documentation of electrical designs.



10 Refinements to bend radius control

- Avoid bend radius errors with automated routing of wire, cable, and harnesses in 3D.
- Create more robust 3D routing when using limited electrical guide path sketches.

Benefits

Improve design quality through a more realistic 3D representation of electrical routes.

Our 3DEXPERIENCE® platform powers our brand applications, serving 11 industries, and provides a rich portfolio of industry solution experiences.

Dassault Systèmes, the 3DEXPERIENCE Company, is a catalyst for human progress. We provide business and people with collaborative virtual environments to imagine sustainable innovations. By creating 'virtual experience twins' of the real world with our 3DEXPERIENCE platform and applications, our customers push the boundaries of innovation, learning and production.

Dassault Systèmes' 20,000 employees are bringing value to more than 270,000 customers of all sizes, in all industries, in more than 140 countries. For more information, visit www.3ds.com.



3DEXPERIENCE®